

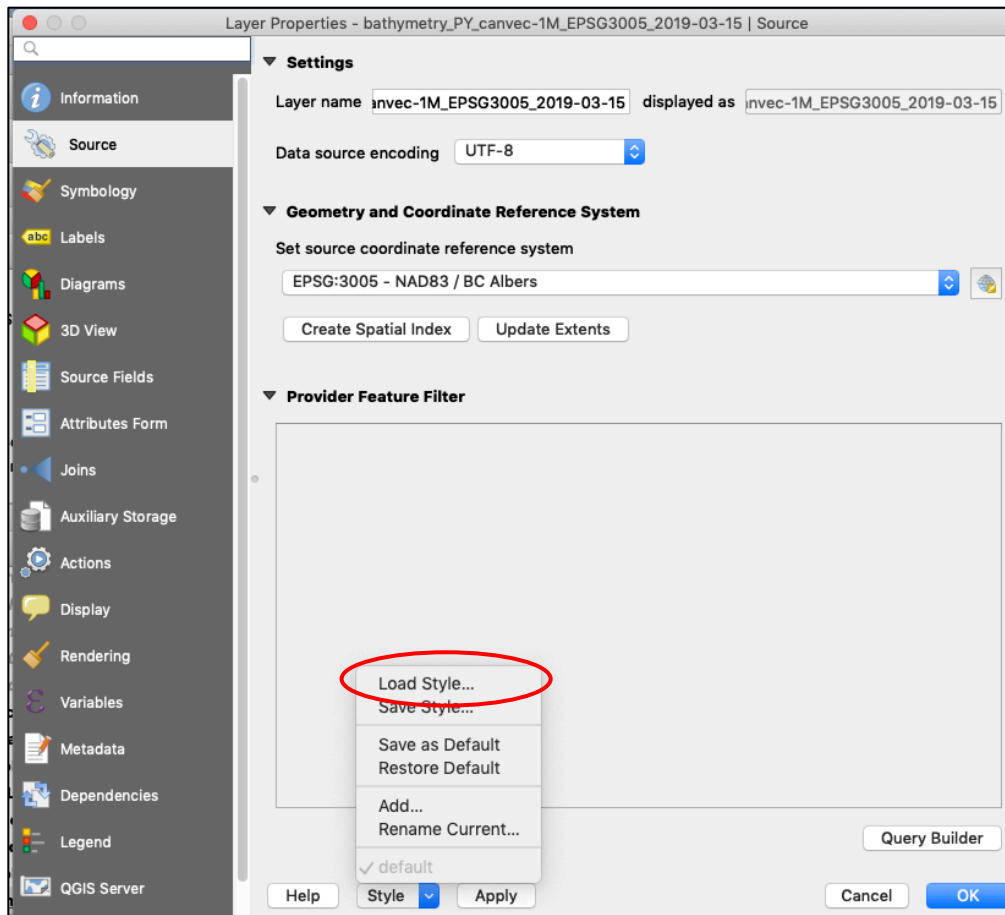
QGIS Report Map Preparation

This tutorial uses the base map QGIS project prepared as part of the ESI Data Management Framework. Documentation on the base map project is available in the AQGIS references folder.

Tutorial

1. Rename the ESI Base Map Project to Road Density Map March 2020
2. Make a new folder named "Analysis" in the project GIS Layers folder
3. Copy the Skeena_ESI_T1_Watershed_net_20191101 layer into the Analysis folder
4. Open the renamed project in QGIS
5. Add the Skeena_ESI_T1_Watershed_net_20191101 layer
6. Drag the Skeena_ESI_T1_Watershed_net_20191101 layer to between the streams and wetlands layers in the layers panel
7. Apply your saved style to the layer

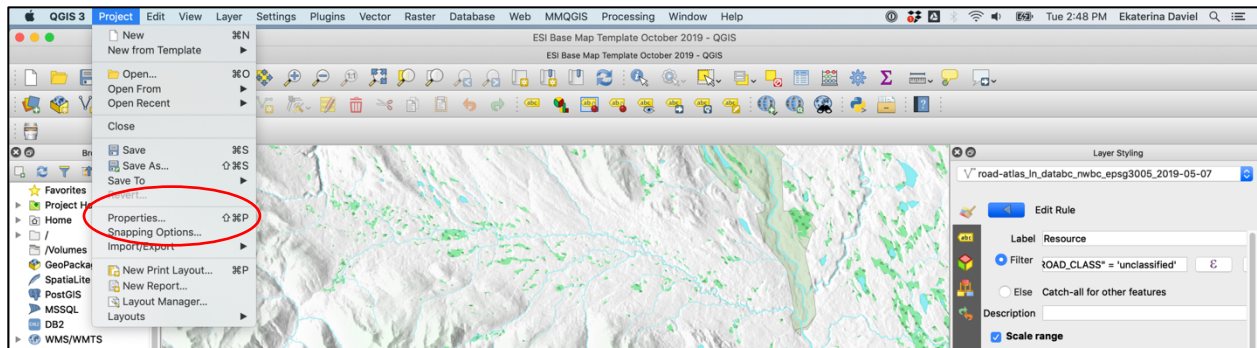
Properties > Source > Load Style



8. Decrease the opacity of your layer (i.e. make it more transparent)

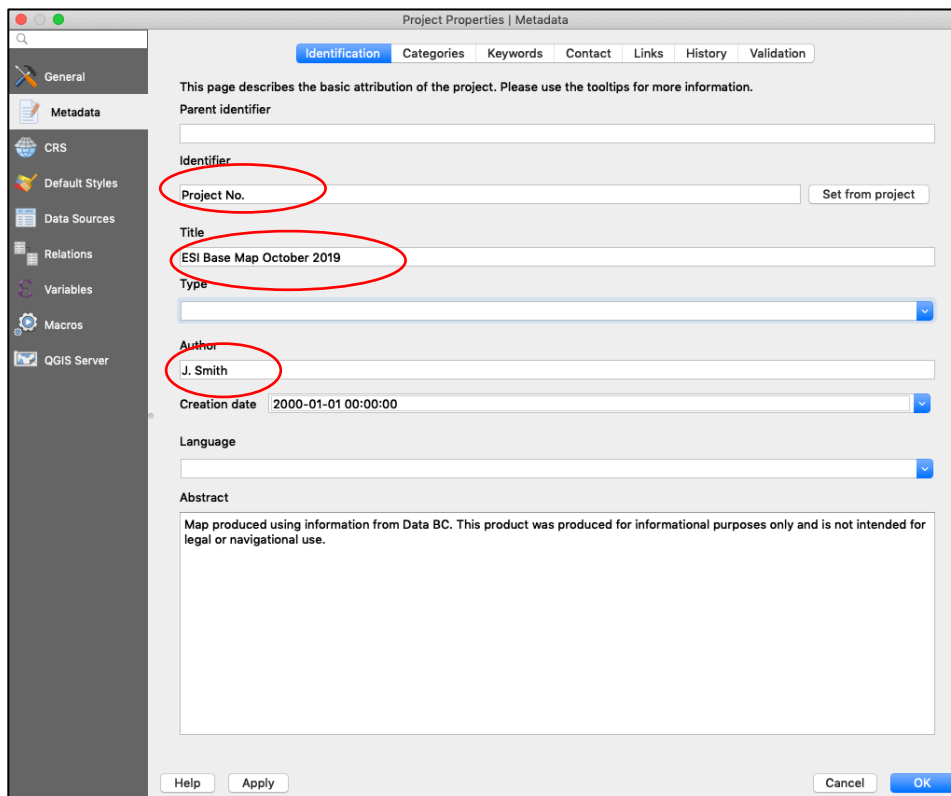
Properties > Symbology > Symbol > Decrease the opacity to 30% using the slider or the text box

9. From the ribbon at the top of the QGIS window select Project > Properties

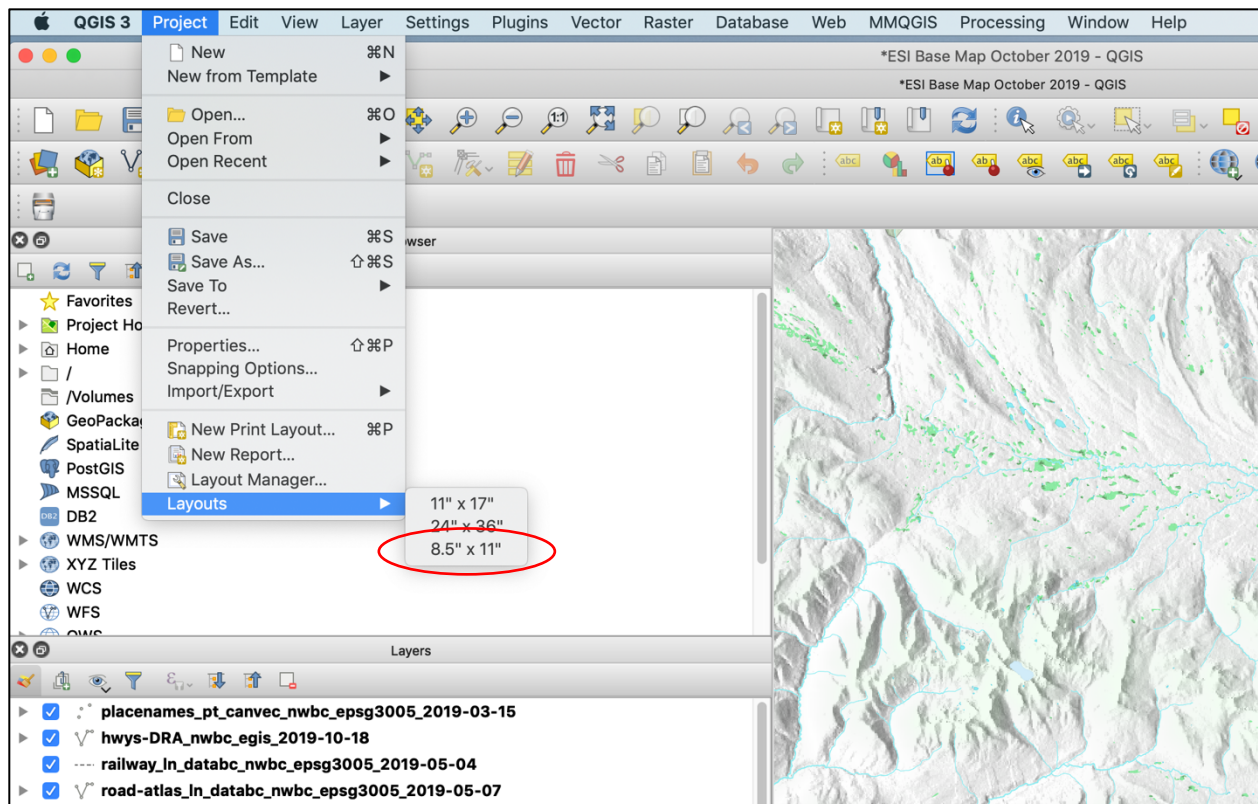


10. Update the following fields:

- a. Identifier with project number or name
- b. Title with project title
- c. Author
- d. Abstract (optional)

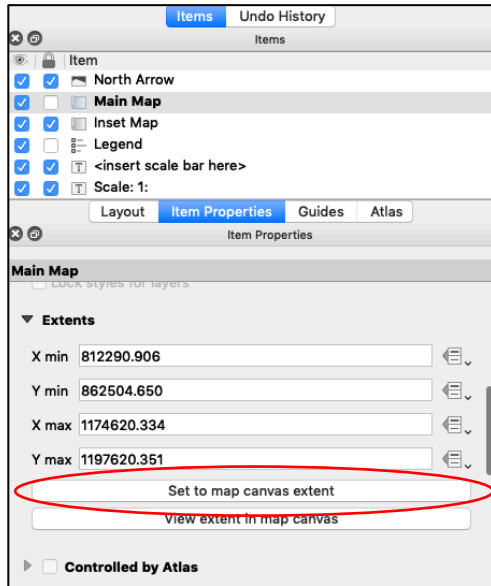


11. Pan to your area of interest using the navigation and zoom tools
12. Save your QGIS project.
13. Open a print layout based on your printing preferences. Templates for letter (8.5" x 11"), tabloid (11" x 17") and ANSI D (22" x 34") are pre-loaded and can be selected from Project > Layouts. Select the 8.5" x 11" template.

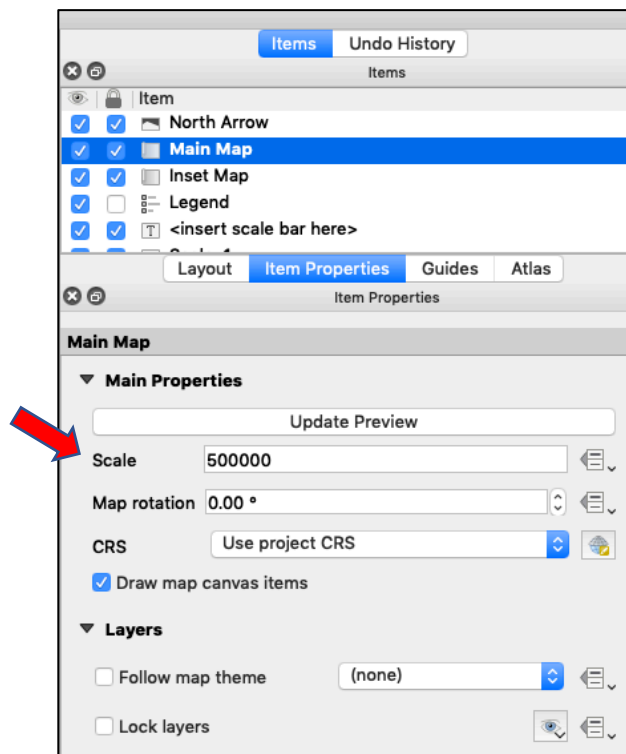


14. Wait for map to generate. Adjust pan and scale to your requirements. The inset map will automatically update.

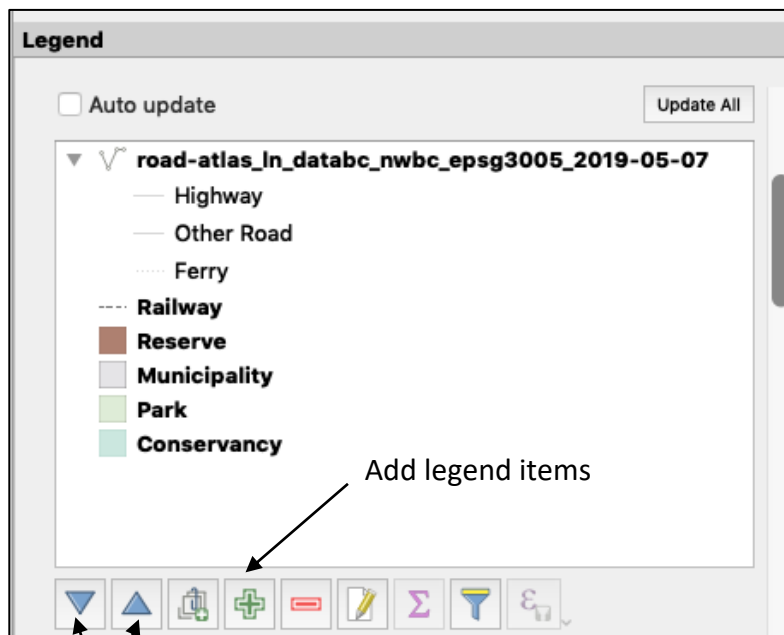
15. Select Main Map in the Item Panel and scroll down in the Item Properties. Click on Set to map canvas extent. (It might take a few seconds to re-draw).



16. Centre the Main Map over your area of interest if needed. You may need to **unlock** the Main Map item on the Item Panel and select Edit > Move Content. Adjust the map scale on the Item Properties Panel.



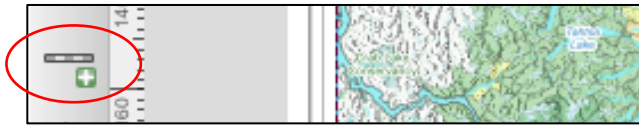
17. Fields automatically updated in the templates include:
 - a. Map Title (derived from QGIS project information, Step 9)
 - b. Author (from QGIS project information, Step 9)
 - c. Project No. (from QGIS project information, Step 9)
 - d. Date (generated from date project last opened)
 - e. Information box (from Abstract in QGIS project information, Step 9)
 - f. Coordinate Reference System (generated from project)
18. Update the following by selecting the items from the Item Panel and editing in the Item Properties panel:
 - a. Organization (under Project Metadata)
 - b. Legend: Remove base layers and add road density. Re-name the group to “Road Density (km/km2) – 2015” by double-clicking on the text.



Reorder legend items

Remove legend items

19. Add new scale bar by clicking on the scale bar icon and draw a box on the canvas. Drag the scale bar to the scale box. Update the scale text and delete the placeholder <inset scale bar here> text box. Adjust the height and font size in the item properties panel under fonts and colours.



20. Save as a new print layout with your project description.
21. Export your map as a pdf or image (tiff, jpeg, etc.) and save in the Maps subfolder within your project folder with a descriptive title as per the ESI naming convention.

Condensed title_report stage_revision number_date

Final Product Example:

